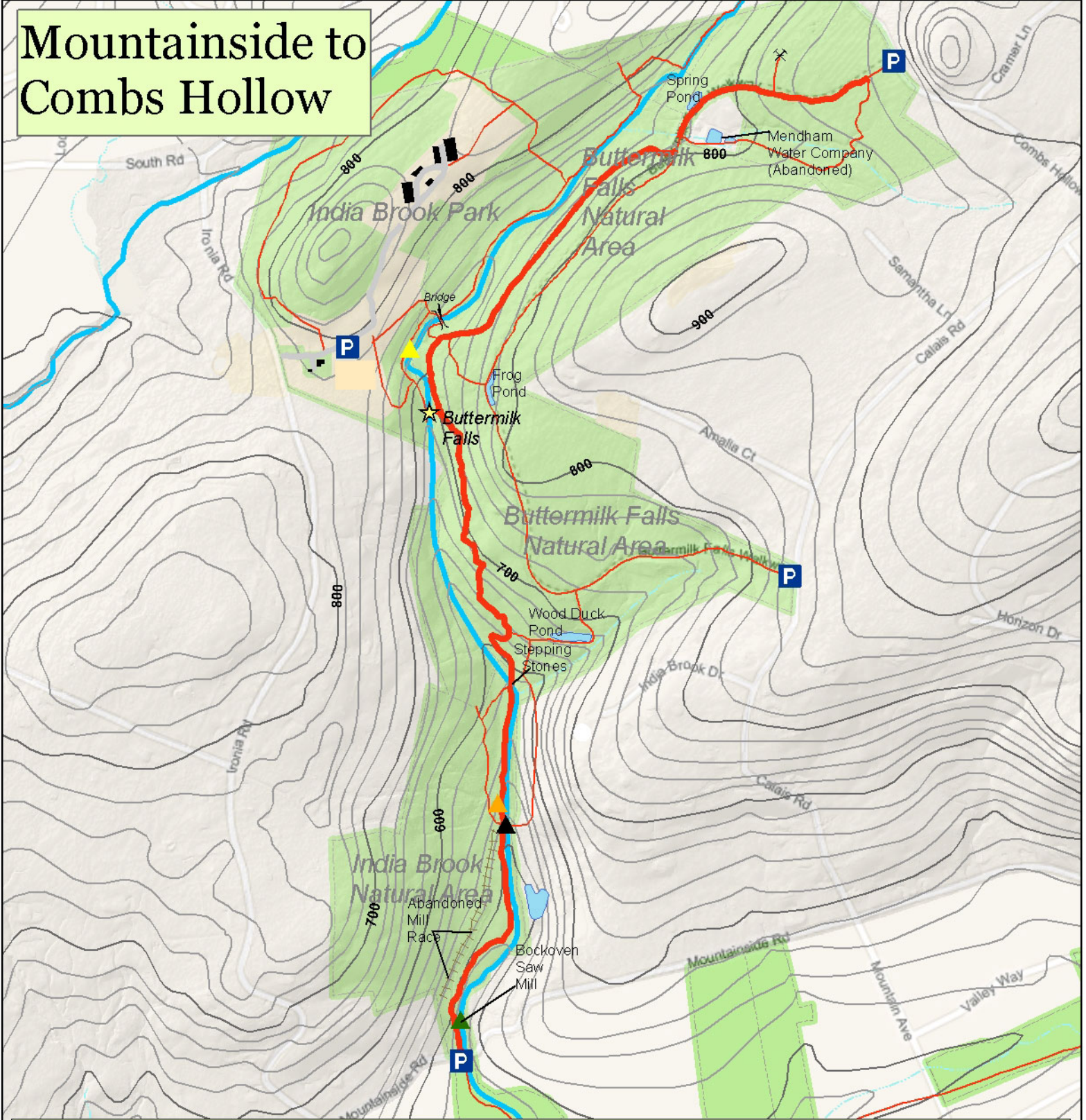


# Mountainside to Combs Hollow



## Mountainside to Combs Hollow - 4 Miles round trip/Difficult

### How to Get There/Where to Start

Park at the Buttermilk Falls Parking Area off Combs Hollow Road. If hiking one-way (2 miles), leave a car at the Mountainside Road trailhead at the India Brook Bridge, between Ironia and Mountain Ave.

### Legend

- |  |                   |  |                 |  |              |
|--|-------------------|--|-----------------|--|--------------|
|  | Parking Area      |  | Bridge Abutment |  | Hike         |
|  | Buttermilk Falls  |  | Lewis Forge     |  | Other Trails |
|  | Bridge            |  | Lewis Mine      |  |              |
|  | Bockoven Saw Mill |  | Rush Forge      |  |              |

### Trail Description

One of the most challenging hikes in Mendham Township, this route can be hiked either one way, if you leave a car at the Mountainside Rd. parking area, or up and back, if you prefer to just drive one car and leave it at the Combs Hollow Parking Area. There is a challenging stream crossing over stepping stones about 2/3 of the way down the trail.

### What to Bring

Cell Phone, Snack Foods, First Aid Kit, Sunscreen, Backpack, Water Bottle, & This Map. Please note that trails are rustic and surfaces can be uneven. Call 911 for Emergencies.